



HISTORY VS. RANKED TEAMS

Rk	Opponent	Date	Result	OT	Other	CUR
1/1	at Tennessee	12/20/93	L 82-86	OT		7/7
1/1	TENNESSEE	12/17/94	L 72-78			8/8
1/1	LOUISIANA TECH	11/25/95	L 61-65			11/11
1/2	TEXAS	2/14/04	L 45-51			12/12
2/2	LOUISIANA TECH	1/3/89	W 61-60			
2/2	vs. Oklahoma	3/25/02	L 60-94		NCAA	12/12
2/2	LSU	11/27/04	L 44-75			
2/2	at Stanford	2/23/12	L 46-68			
3/2	at Louisiana Tech	1/6/88	L 59-66			
3/2	STANFORD	12/28/96	L 48-64			
3/3	at Vanderbilt	11/15/01	L 51-72			12/12
3/3	at Oklahoma	1/2/02	L 67-78			16/14
3/2	OKLAHOMA	1/21/09	L 58-72			
3/3	at Nebraska	2/20/10	L 73-89			
3/3	BAYLOR	3/5/11	L 59-81			
4	at Long Beach State	1/7/81	L 55-77			18
4/4	vs. Iowa	1/3/93	W 72-70			10/10
4/4	at Louisiana Tech	12/3/94	L 62-77			10/8
4/4	at Kansas State	1/11/03	L 36-61			24/23
4/4	STANFORD	1/14/12	L 54-80			
4/3	STANFORD	1/4/13	L 40-57			20/25
4/4	vs. Stanford	3/9/13	L 47-61		Pac-12	18/18
4/4	STANFORD	1/12/14	L 77-87			17/18
4/3	vs. Stanford	3/7/14	L 54-69		Pac-12	
5	at Kansas	1/15/81	L 69-88			
5/5	at Stanford	12/9/88	L 75-106			20/25
5/5	at Texas	12/28/89	L 67-90			
5/6	vs. Texas Tech	3/27/93	L 54-79		NCAA	10/10
5/6	at Texas Tech	1/17/98	L 40-80			
5/5	vs. Stanford	3/23/02	W 62-59		NCAA	12/12
5/5	KANSAS STATE	3/1/03	L 59-67			
5/7	vs. Texas	3/13/03	L 47-62		Big 12	
6/9	VANDERBILT	11/30/91	L 69-79			
6/5	vs. Stanford	3/25/93	W 80-67		NCAA	10/10
6/6	KANSAS	2/4/94	W 75-67			7/8
6/5	vs. Texas Tech	3/4/98	L 49-80		Big 12	
6/7	vs. Texas Tech	3/8/00	L 60-76		Big 12	
6/6	IOWA STATE	2/14/01	W 73-66			19/21
6/8	BAYLOR	2/26/05	L 65-84			
6/5	BAYLOR	1/10/09	L 50-63			
6/4	NEBRASKA	1/30/10	L 64-80			
6/6	at Stanford	1/27/13	L 56-69			20/23

Rk	Opponent	Date	Result	OT	Other	CUR
7	KANSAS STATE	1/25/84	L 55-77			
7/9	at Long Beach State	3/19/88	L 64-013		NCAA	
7/7	STANFORD	12/6/90	W 71-66			
7/5	vs. Purdue	12/3/95	W 79-64			8/8
7/7	TEXAS TECH	1/11/97	W 63-49			
7/7	at Iowa State	1/27/01	L 61-95			25/—
7/7	vs. Oklahoma	3/8/01	L 93-102		Big 12	20/21
7/7	TEXAS TECH	1/26/03	L 58-80			
7/6	OKLAHOMA	1/20/07	L 67-82			
7/5	at Texas A&M	1/8/11	L 57-85			
7/7	CALIFORNIA	1/6/13	L 49-53			20/25
7/7	at California	1/25/13	L 56-59			20/23
7/7	at Louisville	12/21/13	L 62-69			11/14
8	KANSAS STATE	2/19/83	W 84-67			
8	MISSOURI	2/22/84	L 63-94			
8/9	at Iowa State	2/5/00	L 64-82			
8/9	at Texas Tech	2/28/04	L 51-60			14/13
8/8	at Baylor	2/27/08	L 62-76			
8/8	LOUISVILLE	12/14/12	W 70-66			RV/—
9	vs. Kansas	1/18/80	L 76-98			
9	at Missouri	3/6/84	L 51-113		Big 8	
9/9	at Arkansas	11/21/95	W 73-71		PWNIT	11/11
9/8	at Baylor	2/20/02	L 69-80			11/13
10	TENNESSEE	12/8/81	W 78-60			
10/11	vs. Tennessee	3/22/97	L 67-75		NCAA	18/21
10/11	IOWA STATE	1/8/00	L 68-83			
10/13	at Vanderbilt	3/19/01	L 59-65		NCAA	20/21
10/11	at Texas	2/19/03	L 55-75			
10/11	at Kansas State	2/8/04	L 53-79			11/10
10/10	at Baylor	2/22/06	L 40-86			
10/10	at Oklahoma	2/9/08	L 66-82			
11/12	OKLAHOMA	1/15/86	W 91-84			
11/12	vs. Western Kentucky	12/27/91	W 71-68	OT		
11/10	at Stanford	3/24/94	L 62-78		NCAA	
11/7	TEXAS TECH	2/24/99	L 71-83			
11/10	vs. Iowa State	3/6/02	L 56-58		Big 12	10/11
11/12	vs. Villanova	3/29/03	L 51-53		NCAA	
11/12	KANSAS STATE	1/10/04	L 69-76			14/14
12	at Kansas State	2/16/84	L 67-94			
12/12	at Kansas	1/9/94	L 57-59			4/4
12/12	vs. Georgia	3/25/95	L 79-82		NCAA	2/2
12/12	vs. Penn State	12/2/95	L 57-76			8/8
12/12	at Texas	2/26/97	W 60-56			
12/13	vs. Texas	3/6/97	W 64-50		Big 12	
12/10	at Iowa State	2/9/02	L 75-85			13/13
12/12	KANSAS STATE	2/23/02	W 79-58			11/13
12/11	NORTH CAROLINA	3/24/03	W 86-67		NCAA	
12/8	at Texas A&M	2/14/09	L 50-79			
12/17	OKLAHOMA STATE	1/24/10	L 63-74			
12/12	at Oklahoma	2/13/10	L 55-65			
12/15	TEXAS A&M	2/27/10	L 61-95			
13	vs. Kansas State	1/19/80	L 69-81			
13	vs. Oregon	12/5/81	W 69-68			
13	at Kansas State	1/15/83	L 59-75			
13	at Missouri	2/1/84	L 63-105			
13/14	vs. Kansas	3/9/92	W 70-53		Big 8	
13/11	at Washington	12/28/94	W 55-51			9/8
13/13	at Illinois	1/4/98	L 44-88			21/23
13/15	at Oregon	12/4/99	L 58-90			
13/16	at Texas Tech	2/3/02	W 74-69	OT		
13/11	at Minnesota	11/23/03	L 61-95			16/16
13/13	TEXAS TECH	1/15/05	L 41-87			
13/13	at Texas	2/23/05	L 40-83			
13/15	vs. Texas A&M	3/7/07	L 45-62		Big 12	
13/13	at Iowa State	3/6/10	L 41-59			
14	at Oregon	3/18/81	L 67-74		AIAW	17
14	at Missouri	1/17/83	L 64-90			
14	MISSOURI	2/4/83	W 83-68			
14	vs. Kansas State	3/11/83	L 63-97		Big 8	
14/16	vs. LSU	12/2/89	L 60-63			



Gretchen DeWitte, Sherrice King, Crystal Ford and Rosland Starks were part of the 1988-89 team that defeated No. 2 Louisiana Tech, 61-60, on Jan. 3, 1989.

HISTORY VS. RANKED TEAMS

Rk	Opponent	Date	Result	OT	Other	CUR	Rk	Opponent	Date	Result	OT	Other	CUR
14/15	WASHINGTON	11/24/90	L 60-87				22/23	NEBRASKA	2/21/93	W 71-63			4/4
14/14	KANSAS	2/15/97	L 60-72				22/21	at Oklahoma State	2/26/93	W 49-48			4/5
14/15	IOWA STATE	1/13/99	L 84-90				22/22	vs. Tulane	12/6/97	L 62-63			16/16
14/18	at Kansas State	1/9/02	L 72-75			21/19	22/20	at Kansas	2/3/99	L 57-65			
14/10	IOWA STATE	1/23/02	W 86-73			20/19	22/24	LSU	3/17/02	W 69-58		NCAA	12/12
14/14	BAYLOR	2/21/07	L 67-75				22/22	at Oklahoma State	1/14/09	L 43-79			
14/19	TEXAS	2/10/10	L 50-74				22/17	vs. Kansas State	3/12/09	L 51-68		Big 12	
14/23	ARIZONA STATE	1/26/14	L 66-68			RV/RV							
15/14	vs. Ohio State	12/5/86	L 64-87				23/22	vs. Kansas	3/6/95	W 61-45		Big 8	3/3
15/15	at Washington	12/28/91	L 53-58				23/22	at Iowa State	2/11/98	L 43-58			
15/15	KANSAS	2/10/95	W 84-73			3/3	23/20	NEBRASKA	1/23/99	W 70-53			
15/15	at Kansas	1/25/97	L 58-61				23/—	at Texas	1/13/07	L 49-68			
15/13	TEXAS TECH	2/21/01	L 61-68			16/20	23/21	VIRGINIA	1/2/10	L 59-74			
15/16	at Colorado State	11/28/01	L 69-81			11/10							
15/16	NOTRE DAME	11/15/03	W 67-63	OT		20/20	24/19	at Kansas	1/18/92	L 48-66			
15/15	KANSAS STATE	2/23/08	W 73-68				24/23	at Kansas	2/24/95	W 90-81	OT		3/3
15/17	at Baylor	2/6/10	L 42-76				24/22	at Oklahoma State	1/26/96	L 46-50			16/11
							24/—	at Baylor	1/7/04	W 69-59			14/14
							24/22	at Oklahoma	2/18/04	L 58-78			13/13
16	ARIZONA STATE	11/19/83	W 95-73				25/24	OKLAHOMA STATE	2/23/91	W 65-63			
16/17	UNLV	3/18/89	L 74-84		NCAA	9/11	25/—	at Oklahoma	2/3/95	W 69-64			4/4
16/14	KANSAS	2/12/92	W 65-54				25/25	at Nebraska	1/4/97	W 65-58			
16/15	at Stephen F. Austin	12/4/93	W 81-62			11/12	25/—	at Oklahoma	1/22/00	L 73-76			
16/16	NEBRASKA	1/7/98	W 84-78				25/24	KANSAS	2/1/00	L 66-74			
16/16	at Iowa State	2/13/99	L 70-86				25/24	at Iowa State	2/25/09	L 63-76			
16/14	at Texas Tech	1/12/00	L 50-75				—/20	OKLAHOMA	2/15/03	W 61-57			
16/16	FLORIDA	11/22/00	W 98-62				—/20	IOWA STATE	1/16/10	L 62-68			
16/16	KANSAS STATE	1/29/05	L 70-81				—/21	at Missouri	1/24/87	W 94-91			
16/15	VANDERBILT	11/12/06	L 76-81				—/21	NEBRASKA	1/30/88	W 84-69			
16/15	at Virginia	11/24/08	L 43-77				—/21	KANSAS STATE	3/7/09	L 61-71			
16/17	at Texas	1/17/09	L 32-62										
16/14	at Kansas State	2/21/09	L 60-72										
16/18	vs. Baylor	3/11/10	L 65-72		Big 12								
16/15	OKLAHOMA	2/23/11	W 73-68										
17/17	at Oklahoma	2/15/86	L 69-82				—/23	at Oklahoma	2/20/85	L 58-80			
17/17	at Stanford	12/28/97	L 73-87			18/20	—/23	OKLAHOMA	1/27/87	W 94-80			
17/20	ILLINOIS	12/28/99	W 78-70				—/23	at Nebraska	2/22/98	L 53-78			
17/18	at Texas A&M	1/18/07	L 58-74				—/23	KANSAS	1/20/99	W 76-65			
17/16	IOWA STATE	1/15/11	W 66-60	OT			—/23	WASHINGTON	12/9/03	W 78-64			17/14
18/17	vs. George Washington	3/23/95	W 77-61		NCAA	2/3	—/25	at Nebraska	2/20/88	L 73-85	OT		
18/17	at Kansas State	2/19/05	L 51-73				—/25	OKLAHOMA STATE	1/6/95	W 71-52			7/6
18/19	vs. Iowa State	3/8/05	L 62-64		Big 12								
18/16	at Oklahoma	1/7/06	L 61-84										
18/19	at UCLA	2/1/13	L 46-62			22/23							
19/21	OKLAHOMA	1/29/85	L 65-73										
19/20	vs. Old Dominion	12/30/95	L 65-77			10/6							
19/18	AUBURN	3/17/96	L 61-68	OT	NCAA	17/17							
19/17	STEPHEN F AUSTIN	3/16/97	W 66-57		NCAA	18/21							
19/16	OKLAHOMA	1/3/01	L 69-89										
19/20	vs. Oklahoma	3/10/04	L 56-63		Big 12	13/13							
19/18	at Iowa State	2/2/05	L 76-103										
19/16	TEXAS A&M	1/16/08	L 68-72			25/—							
19/19	CALIFORNIA	1/10/14	L 55-57			17/18							
20/20	TEXAS	12/9/90	L 64-93										
20/22	vs. Kansas	3/4/96	W 75-47		Big 8	19/19							
20/19	at Nebraska	1/6/99	L 49-90										
20/22	BAYLOR	2/3/01	W 85-66			23/—							
20/20	at Florida	12/21/01	L 50-61			14/12							
20/17	at Vanderbilt	12/9/07	W 62-51										
20/23	IOWA STATE	2/7/09	L 47-53										
20/23	at Iowa State	2/19/11	L 45-71										
20/24	at Arizona State	2/21/14	L 51-55										
21/19	OKLAHOMA STATE	1/31/93	W 78-76			7/7							
21/20	N.C. STATE	2/1/97	W 67-62										
21/23	at Kansas	1/15/00	L 56-78										
21/20	at Texas	1/31/01	L 62-65			23/—							
21/22	vs. LSU	12/29/01	W 86-65			18/15							
21/20	TEXAS	1/6/02	L 68-70			16/14							
21/21	NEBRASKA	2/10/07	L 44-54										
21/22	WYOMING	12/5/07	W 69-55										
21/18	OKLAHOMA STATE	2/2/08	L 71-82										



Colorado's 70-66 win over Louisville on Dec. 14, 2012 was its 14th all-time over a top 10 opponent and first since 2002.



HISTORY VS. RANKED TEAMS BY SEASON

Rk#	Team	Res	Date	CUR
1979-80 (0-2)				
9	^vs. Kansas	L	76-98	1/18/80
13	^vs. Kansas State	L	69-81	1/19/80
(Neutral: 0-2)				

Rk#	Team	Res	Date	CUR
1980-81 (0-3)				
4	at Long Beach State	L	55-77	1/7/81
5	^at Kansas	L	69-88	1/15/81
14	!at Oregon	L	67-74	3/18/81
(Away: 0-3)				

Rk#	Team	Res	Date	CUR
1981-82 (2-0)				
13	vs. Oregon	W	69-68	12/5/81
10	TENNESSEE	W	78-60	12/8/81
(Home: 1-0, Neutral: 1-0)				

Rk#	Team	Res	Date	CUR
1982-83 (2-3)				
13	at Kansas State	L	59-75	1/15/83
14	at Missouri	L	64-90	1/17/83
14	MISSOURI	W	83-68	2/4/83
8	KANSAS STATE	W	84-67	2/19/83
14	^vs. Kansas State	L	63-97	3/11/83
(Home: 2-0, Away: 0-2, Neutral: 0-1)				

Rk#	Team	Res	Date	CUR
1983-84 (1-5)				
16	ARIZONA STATE	W	95-73	11/19/83
7	KANSAS STATE	L	55-77	1/25/84
13	at Missouri	L	63-105	2/1/84
12	at Kansas State	L	67-94	2/16/84
8	MISSOURI	L	63-94	2/22/84
9	^at Missouri	L	51-113	3/6/84
(Home: 1-2, Away: 0-3)				



Colorado has eight wins over ranked Kansas teams, the most against any one opponent.

Rk#	Team	Res	Date	CUR
1984-85 (0-2: 0-1 Both, 0-1 AP, 0-2 WBCA)				
19/21	OKLAHOMA	L	65-73	1/29/85
-/21	at Oklahoma	L	58-80	2/20/85
(Home: 0-1, Away: 0-1)				

Rk#	Team	Res	Date	CUR
1985-86 (1-1 Both)				
11/12	OKLAHOMA	W	91-84	1/15/86
17/17	at Oklahoma	L	69-82	2/15/86
(Home: 1-0, Away: 0-1)				

Rk#	Team	Res	Date	CUR
1986-87 (2-1: 0-1 Both, 0-1 AP, 2-1 WBCA)				
15/14	vs. Ohio State	L	64-87	12/5/86
-/21	at Missouri	W	94-91	1/24/87
-/23	OKLAHOMA	W	94-80	1/27/87
(Home: 1-0, Away: 1-0, Neutral: 0-1)				

Rk#	Team	Res	Date	CUR
1987-88 (1-3: 0-2 Both, 0-2 AP, 1-3 WBCA)				
3/2	at Louisiana Tech	L	59-66	1/6/88
-/23	NEBRASKA	W	84-69	1/30/88
-/25	at Nebraska	L	73-85	2/20/88
7/9	*at Long Beach State	L	64-103	3/19/88
(Home: 1-0, Away 0-3)				

Rk#	Team	Res	Date	CUR
1988-89 (1-2 Both)				
5/5	at Stanford	L	75-106	12/9/88
2/2	LOUISIANA TECH	W	61-60	1/3/89
16/17	*UNLV	L	74-84	3/18/89
(Home: 1-1, Away 0-1)				

Rk#	Team	Res	Date	CUR
1989-90 (0-2 Both)				
14/16	vs. LSU	L	60-63	12/2/89
5/5	at Texas	L	67-90	12/28/89
(Away: 0-1, Neutral 0-1)				

Rk#	Team	Res	Date	CUR
1990-91 (2-2 Both)				
14/15	WASHINGTON	L	60-87	11/24/90
7/7	STANFORD	W	71-66	12/6/90
20/20	TEXAS	L	64-93	12/9/90
25/24	OKLAHOMA STATE	W	65-63	2/23/91
(Home: 2-2)				

Rk#	Team	Res	Date	CUR
1991-92 (3-3 Both)				
6/9	VANDERBILT	L	69-79	11/30/91
11/12	vs. Western Kentucky	W	71-68	12/27/91
15/15	at Washington	L	53-58	12/28/91
24/19	at Kansas	L	48-66	1/18/92
16/14	KANSAS	W	65-54	2/12/92
13/14	^vs. Kansas	W	70-53	3/9/92
(Home: 1-1, Away: 0-2, Neutral: 2-0)				

Rk#	Team	Res	Date	CUR
1992-93 (5-1 Both)				
4/4	vs. Iowa	W	72-70	1/3/93
21/19	OKLAHOMA STATE	W	78-76	1/31/93
22/23	NEBRASKA	W	71-63	2/21/93
22/21	at Oklahoma State	W	49-48	2/26/93
6/5	*vs. Stanford	W	80-67	3/25/93
5/6	*vs. Texas Tech	L	54-79	3/27/93
(Home: 2-0, Away: 1-0, Neutral: 2-1)				

Rk#	Team	Res	Date	CUR
1993-94 (2-3 Both)				
16/15	at Stephen F. Austin	W	81-62	12/4/93
1/1	at Tennessee	L	82-86	12/20/93
12/12	at Kansas	L	57-59	1/9/94
6/6	KANSAS	W	75-67	2/4/94
11/10	*at Stanford	L	62-78	3/24/94
(Home: 1-0, Away 1-3)				

Rk#	Team	Res	Date	CUR
1994-95 (7-3: 5-3 Both, 6-3 AP, 6-3 WBCA)				
4/4	at Louisiana Tech	L	62-77	12/3/94
1/1	TENNESSEE	L	72-78	12/17/94
13/11	at Washington	W	55-51	12/28/94
-/25	OKLAHOMA STATE	W	71-52	1/6/95
25/-	at Oklahoma	W	69-64	2/3/95
15/15	KANSAS	W	84-73	2/10/95
24/23	at Kansas	W	90-81	2/24/95
23/22	^vs. Kansas	W	61-45	3/6/95
18/17	*vs. G. Washington	W	77-61	3/23/95
12/12	*vs. Georgia	L	79-82	3/25/95
(Home: 2-1, Away: 3-1, Neutral: 2-1)				

Rk#	Team	Res	Date	CUR
1995-96 (3-5 Both)				
9/9	at Arkansas	W	73-71	11/21/95
1/1	LOUISIANA TECH	L	61-65	11/25/95
12/12	vs. Penn State	L	57-76	12/2/95
7/5	vs. Purdue	W	79-64	12/3/95
19/20	vs. Old Dominion	L	65-77	12/30/95
24/22	at Oklahoma State	L	46-50	1/26/96
20/22	^vs. Kansas	W	75-47	3/4/96
19/18	*AUBURN	L	61-68	3/17/96
(Home: 0-2, Away: 1-1, Neutral: 2-2)				

Rk#	Team	Res	Date	CUR
1996-97 (6-4 Both)				
3/2	STANFORD	L	48-64	12/28/96
25/25	at Nebraska	W	65-58	1/4/97
7/7	TEXAS TECH	W	63-49	1/11/97
15/15	at Kansas	L	58-61	1/25/97
21/20	N.C. STATE	W	67-62	2/1/97
14/14	KANSAS	L	60-72	2/15/97
12/12	at Texas	W	60-56	2/26/97
12/13	^vs. Texas	W	64-50	3/6/97
19/17	*SFA	W	66-57	3/16/97
10/11	*vs. Tennessee	L	67-75	3/22/87
(Home: 3-2, Away: 2-1, Neutral: 1-1)				

Record Breakdown vs. Ranked Opponents

	Overall	Both	AP	WBCA
Home	38-50	28-46	32-48	35-48
Away	12-79	9-66	11-76	9-69
Neutral	12-25	11-22	12-25	11-22
Total	62-154	48-134	55-149	55-139

Overall: Opponent ranked in either poll or both.

Both: Opponent ranked in both AP & WBCA polls.

AP: Record against AP poll

WBCA: Record against WBCA poll



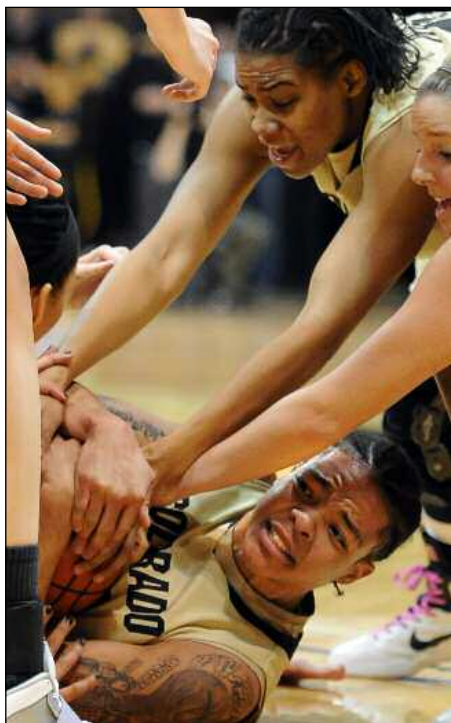
HISTORY VS. RANKED TEAMS BY SEASON

Rk#	Team	Res	Date	CUR
2010-11 (2-3: Both)				
7/5	at Texas A&M	L 57-85	1/8/11	
17/16	IOWA STATE	W 66-60 OT	1/15/11	
20/23	at Iowa State	L 45-71	2/19/11	
16/15	OKLAHOMA	W 73-68	2/23/11	
3/3	BAYLOR	L 59-81	3/5/11	
(Home: 2-1, Away: 0-2)				
2011-12 (0-2: Both)				
4/4	STANFORD	L 54-80	1/14/12	
2/2	at Stanford	L 46-68	2/23/12	
(Home: 0-1, Away: 0-1)				
2012-13 (1-6 Both)				
8/8	LOUISVILLE	W 70-66	12/14/12	RV/—
4/3	STANFORD	L 40-57	1/4/13	20/25
7/7	CALIFORNIA	L 49-53	1/6/13	20/25
7/7	at California	L 56-59	1/25/13	20/23
6/6	at Stanford	L 56-69	1/27/13	20/23
18/19	at UCLA	L 46-62	2/1/13	22/23
4/4	^vs. Stanford	L 47-61	3/9/13	18/18
(Home: 1-2, Away: 0-3, Neutral: 0-1)				
2013-14 (0-6 Both)				
7/7	at Louisville	L 62-69	12/21/13	11/14
19/19	CALIFORNIA	L 55-57	1/10/14	17/18
4/4	STANFORD	L 77-87	1/12/14	17/18
14/23	ARIZONA STATE	L 66-68	1/26/14	RV/RV
20/24	at Arizona State	L 51-55	2/21/14	
4/3	vs. Stanford	L 54-69	3/7/14	
(Home: 0-3, Away: 0-2, Neutral: 0-1)				

*NCAA; !AIAW; ^Conference Tournament
 #Rankings listed as AP/WBCA. AP poll began in 1977,
 WBCA poll in 1985



Colorado played six top 10 teams in 2012-13 and at one point played three straight on the road, a program first.



Colorado has faced Oklahoma 20 times when the Sooners have been ranked, the most against any opponent. The Buffaloes have five wins over ranked OU teams, including a 73-68 decision over the No. 16/15 Sooners on Feb. 23, 2011.

Colorado vs. Ranked Teams by School

School	Top 10	W	L
Arizona State	0-0	1	2
Arkansas	1-0	1	0
Auburn	0-0	0	1
Baylor	0-6	2	9
California	0-2	0	3
Colorado State	0-0	0	1
Florida	0-0	1	1
George Washington	0-0	1	0
Georgia	0-0	0	1
Illinois	0-0	1	1
Iowa	1-0	1	0
Iowa State	2-5	3	15
Kansas	1-2	8	9
Kansas State	1-4	3	15
Long Beach State	0-2	0	2
LSU	0-1	2	2
Louisiana Tech	1-3	1	3
Louisville	1-1	1	1
Minnesota	0-0	0	1
Missouri	0-2	2	4
Nebraska	0-2	5	6
UNLV	0-0	0	1
North Carolina	0-0	1	0
N.C. State	0-0	1	0
Notre Dame	0-0	1	0
Ohio State	0-0	0	1
Oklahoma	0-6	5	15
Oklahoma State	0-0	4	4
Old Dominion	0-0	0	1
Oregon	0-0	1	2
Penn State	0-0	0	1
Purdue	1-0	1	0
Stanford	3-10	3	11
Stephen F. Austin	0-0	2	0
Tennessee	1-3	1	3
Texas	0-4	2	11
Texas A&M	0-2	0	6
Texas Tech	1-7	2	10
Tulane	0-0	0	1
UCLA	0-0	0	1
Vanderbilt	0-3	1	4
Villanova	0-0	0	1
Virginia	0-0	0	2
Washington	0-0	2	2
Western Kentucky	0-0	1	0
Wyoming	0-0	1	0



CU IN THE POLLS

1980-81	AP
Dec. 16, 1980	20
Dec. 23, 1980	20
Dec. 30, 1980	19
Jan. 5, 1981	18
Mar. 8, 1981	18
Mar. 15, 1981	17

1981-82	AP
Dec. 13, 1981	18
Dec. 20, 1981	15
Dec. 27, 1981	15
Jan. 3, 1982	13
Jan. 10, 1982	15
Jan. 17, 1982	16

1988-89	AP	WBCA
Dec. 5, 1988	20	25
Jan. 16, 1989	20	22
Jan. 23, 1989	18	21
Jan. 30, 1989	16	18
Feb. 6, 1989	15	15
Feb. 13, 1989	15	15
Feb. 20, 1989	10	12
Feb. 26, 1989	10	12
March 6, 1989	9	12
March 13, 1989	9*	11
March 19, 1989		19*

1991-92	AP	WBCA
March 15, 1992	24*	25

1992-93	AP	WBCA
Preseason	25	24
Dec. 8, 1992	19	17
Dec. 15, 1992	13	13
Dec. 22, 1992	10	10
Dec. 29, 1992	10	10
Jan. 5, 1993	7	7
Jan. 12, 1993	6	7
Jan. 19, 1993	4	4
Jan. 26, 1993	7	7
Feb. 2, 1993	5	5
Feb. 9, 1993	4	4
Feb. 16, 1993	4	4
Feb. 23, 1993	4	5
March 2, 1993	6	10
March 9, 1993	9	9
March 15, 1993	10*	10

April 5, 1993	9*
1993-94	AP WBCA
Nov. 16, 1993	12 12
Nov. 30, 1993	11 12
Dec. 7, 1993	9 10
Dec. 14, 1993	7 7
Dec. 21, 1993	6 6
Dec. 28, 1993	5 6
Jan. 4, 1994	4 4
Jan. 11, 1994	7 7
Jan. 18, 1994	6 6
Jan. 25, 1994	3 4
Feb. 1, 1994	7 8
Feb. 8, 1994	5 5
Feb. 15, 1994	3 3
Feb. 22, 1994	3 3
March 1, 1994	3 3
March 8, 1994	2 2
March 15, 1994	5* 5
April 4, 1994	10*

1994-95	AP	WBCA
Preseason	11	10
Nov. 22, 1994	11	10
Nov. 29, 1994	10	8
Dec. 6, 1994	10	8
Dec. 13, 1994	8	8
Dec. 20, 1994	9	9
Dec. 27, 1994	9	8
Jan. 3, 1995	7	6
Jan. 10, 1995	6	6
Jan. 17, 1995	6	6
Jan. 24, 1995	5	5
Jan. 31, 1995	4	4
Feb. 7, 1995	3	3
Feb. 14, 1995	3	3
Feb. 21, 1995	3	3
Feb. 28, 1995	3	3
March 7, 1995	3	3
March 14, 1995	2*	3
April 5, 1995	5*	

1995-96	AP	WBCA
Preseason	14	11
Nov. 20, 1995	11	11
Nov. 27, 1995	8	8
Dec. 4, 1995	8	6
Dec. 11, 1995	8	5
Dec. 18, 1995	9	6
Dec. 25, 1995	10	6

1996-97	AP	WBCA
Preseason	17	15
Nov. 18, 1996	18	15
Nov. 25, 1996	18	13
Dec. 2, 1996	17	15
Dec. 9, 1996	21	20
Dec. 16, 1996	RV	25
March 10, 1997	18*	21
April 1997		15*

1997-98	AP	WBCA
Preseason	18	16
Nov. 17, 1997	18	16
Nov. 24, 1997	16	17
Dec. 1, 1997	16	16
Dec. 8, 1997	21	21
Dec. 15, 1997	21	22
Dec. 22, 1997	18	20
Dec. 29, 1997	21	23

2000-01	AP	WBCA
Jan. 22, 2001	25	RV
Jan. 29, 2001	23	RV
Feb. 5, 2001	19	24(t)
Feb. 12, 2001	19	21
Feb. 19, 2001	16	20
Feb. 26, 2001	17	21
March 5, 2001	20	21
March 12, 2001	20*	21
April 2001		23*

2001-02	AP	WBCA
Preseason	12	13
Nov. 12, 2001	12	12
Nov. 19, 2001	14	12
Nov. 26, 2001	11	10
Dec. 3, 2001	15	14
Dec. 10, 2001	13	12
Dec. 17, 2001	14	12
Dec. 24, 2001	18	15
Dec. 31, 2001	16	14
Jan. 7, 2002	21	19
Jan. 14, 2002	22	19
Jan. 21, 2002	20	19
Jan. 28, 2002	17	17
Feb. 4, 2002	13	13
Feb. 11, 2002	13	13
Feb. 18, 2002	11	13
Feb. 25, 2002	11	12
March 4, 2002	10	11
March 11, 2002	12*	12
April 2002		9*

Jan. 1, 1996	13	10
Jan. 8, 1996	12	9
Jan. 15, 1996	15	11
Jan. 22, 1996	16	11
Jan. 29, 1996	16	14
Feb. 5, 1996	19	16
Feb. 12, 1996	18	16
Feb. 19, 1996	20	18
Feb. 26, 1996	20	19
March 4, 1996	19	19
March 11, 1996	17*	17
April 1996		18*

1996-97	AP	WBCA
Preseason	17	15
Nov. 18, 1996	18	15
Nov. 25, 1996	18	13
Dec. 2, 1996	17	15
Dec. 9, 1996	21	20
Dec. 16, 1996	RV	25
March 10, 1997	18*	21
April 1997		15*

1997-98	AP	WBCA
Preseason	18	16
Nov. 17, 1997	18	16
Nov. 24, 1997	16	17
Dec. 1, 1997	16	16
Dec. 8, 1997	21	21
Dec. 15, 1997	21	22
Dec. 22, 1997	18	20
Dec. 29, 1997	21	23

2000-01	AP	WBCA
Jan. 22, 2001	25	RV
Jan. 29, 2001	23	RV
Feb. 5, 2001	19	24(t)
Feb. 12, 2001	19	21
Feb. 19, 2001	16	20
Feb. 26, 2001	17	21
March 5, 2001	20	21
March 12, 2001	20*	21
April 2001		23*

2001-02	AP	WBCA
Preseason	12	13
Nov. 12, 2001	12	12
Nov. 19, 2001	14	12
Nov. 26, 2001	11	10
Dec. 3, 2001	15	14
Dec. 10, 2001	13	12
Dec. 17, 2001	14	12
Dec. 24, 2001	18	15
Dec. 31, 2001	16	14
Jan. 7, 2002	21	19
Jan. 14, 2002	22	19
Jan. 21, 2002	20	19
Jan. 28, 2002	17	17
Feb. 4, 2002	13	13
Feb. 11, 2002	13	13
Feb. 18, 2002	11	13
Feb. 25, 2002	11	12
March 4, 2002	10	11
March 11, 2002	12*	12
April 2002		9*



Colorado was ranked as high as No. 11 in the AP poll for three weeks during the 2013-14 season, its highest mark in 10 years.

2002-03	AP	WBCA
Dec. 30, 2002	25	25
Jan. 6, 2003	24	23
April 2003		19*

2003-04	AP	WBCA
Preseason	20	20
Nov. 17, 2003	16	16
Nov. 24, 2003	20	16
Dec. 1, 2003	17	15
Dec. 8, 2003	17	14
Dec. 15, 2003	14	13
Dec. 22, 2003	13	13
Dec. 29, 2003	13	13
Jan. 5, 2004	14	14
Jan. 12, 2004	15	15
Jan. 19, 2004	14	14
Jan. 26, 2004	11	10
Feb. 2, 2004	11	10
Feb. 9, 2004	12	12
Feb. 16, 2004	13	13
Feb. 23, 2004	14	13
Mar. 1, 2004	13	13
Mar. 8, 2004	13	13
Mar. 15, 2004	17*	16
April 2004		24*

2007-08	AP	WBCA
Dec. 24, 2007	25	RV
Dec. 31, 2007	23	RV
Jan. 7, 2008	23	RV
Jan. 14, 2008	25	RV

2012-13	AP	WBCA
Dec. 17, 2012	25	RV
Dec. 24, 2012	23	RV
Dec. 31, 2012	20	25
Jan. 7, 2013	23	RV
Jan. 14, 2013	21	25
Jan. 21, 2013	20	23
Jan. 28, 2013	22	23
Feb. 4, 2013	21	25
Feb. 11, 2013	21	25
Feb. 18, 2013	20	23
Feb. 25, 2013	19	19
Mar. 4, 2013	18	18
Mar. 11, 2013	19	19
Mar. 18, 2013	19*	19
Apr. 8, 2013		RV*

2013-14	AP	WBCA
Preseason	19	19
Nov. 11, 2013	17	19
Nov. 18, 2013	16	20
Nov. 25, 2013	14	19
Dec. 2, 2013	11	17
Dec. 9, 2013	11	15
Dec. 16, 2013	11	14
Dec. 23, 2013	12	14
Dec. 30, 2013	12	14
Jan. 6, 2014	17	18
Jan. 13, 2014	21	20

*Final Poll

Poll Notes and Streaks

Colorado was ranked in 75 straight polls from the final poll of the 1991-92 season (Mar. 15, 1992) to Dec. 9, 1996.

Of those 75 polls, 49 weeks were spent among the nation's top-10 teams.

Colorado was ranked in 25 consecutive AP polls from Dec. 17, 2012 to Jan. 13, 2014, the third longest streak in team history (30 from 2001-02).

Colorado has appeared in 183 AP polls, ranking third among Pac-12 schools.